

LOT 63

TERRACE LOFT TOWNHOME

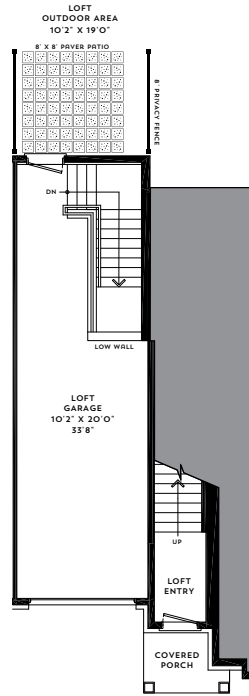
2 BED - 2 BATH / 1,147 sq.ft.

the
SHORES

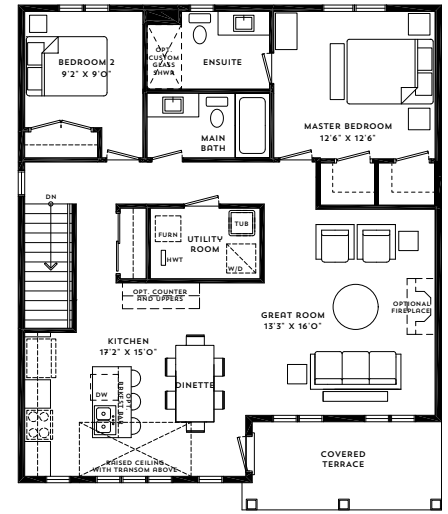
 30 DAY CLOSE



\$549,990



MAIN FLOOR
ENTRY TO LOFT, GARAGE
& BASEMENT STORAGE AREA



SECOND FLOOR

INCLUDES OVER \$30,000 IN UPGRADES!

KITCHEN

- Spacious island bar
- Undermount sink
- Designer tile backsplash
- Stylish sink faucets
- Pots and pans drawers
- Extended height cabinets
- Pot lights
- Waterline rough-in for the fridge
- Microwave provision over oven

BATHROOMS

- Full glass shower in ensuite
- Elongated toilets
- Subway tiles in ensuite and main bathroom shower walls
- Gold ensuite hardware

LIVING ROOM/BASEMENT

- Electric fireplace with mantel
- Pot lights
- Sound dampening insulation in utility room

APPLIANCES INCLUDED

- Fridge
- Stove
- Dishwasher
- Microwave
- Washer/dryer

All renderings are artist's concept. Sizes, materials and specifications are subject to change without notice. E&O.E.



For more information, please contact our sales representatives at
beachwalksales@marzhomes.com

LOT 63
TERRACE LOFT TOWNHOME



For more information, please contact our sales representatives at beachwalksales@marzhomes.com

LIVE. PLAY. GATHER. 5 STAR AMENITIES

Located at the south end of the community is an all-inclusive recreational, work and social centre exclusively for Shores homeowners. The Shores Club facility features an indoor-outdoor social lounge, private workspaces, resort-style landscaped outdoor pool and cabana along with a state-of-the-art sports courtyard.

So whether you crave the sun soaked poolside deck, enjoy the social scene at the Shores Club Lounge, need an inspiring place to focus on work, or just get some play time on the court, you'll find your place at The Shores. Ownership has its club advantages.



EXTENDED LIVING SPACES THAT WORK FOR YOU

CO-WORKING SPACE

HOME IS YOUR MOST VALUED PERSONAL SPACE, BUT WHEN YOU HAVE THE OPTION OF WORKING OR STUDYING IN THE SHORE'S CO-WORKING SPACE, YOUR WORLD EXPANDS. INSPIRING DESIGN AND DÉCOR FEATURES GIVE IT AN APPEALING ATMOSPHERE CONDUCTIVE TO YOUR BEST WORK.

SOCIAL ENTERTAINMENT ZONE

ENTERTAIN FRIENDS AND FAMILY IN STYLE. THE SOCIAL ENTERTAINMENT LOUNGE BRINGS YOU A SPECTACULAR ARRAY OF OPTIONS FOR SOCIALIZING. FULFILL ALL YOUR NEEDS FOR CONNECTING WITH LOVED ONES AND FRIENDS RIGHT HERE AT HOME.

EXERCISE ROOM

ARE YOU A DEVOTED YOGI? OR AN AEROBICS ENTHUSIAST? WHETHER YOU'RE GETTING IN SHAPE FOR GOLF SEASON, OR SIMPLY WISH TO STAY AS FIT AS POSSIBLE, YOU'LL FIND ALL THE SPACE YOU NEED IN THE SHORES CLUB EXERCISE ROOM.

AMENITIES ACCESS

ENTERING THE WELCOMING CANOPIED ENTRANCE OF THE SHORES CLUB, YOU'RE TRANSPORTED INTO THE COASTALLY INSPIRED FURNISHINGS AND CLEVER, PURPOSE DRIVEN DESIGN. THIS SPACE EMBODIES THE FEELING OF COMMUNITY, CONVENIENCE AND CONNECTIVITY. WE CAN'T THINK OF A BETTER USE OF AMENITIES SPACE, EXCLUSIVELY INSPIRED FOR OUR RESIDENTS.